

# Turner's Syndrome and Hearing

What you need to know

*Orla Jones, Chief Audiologist  
Hermitage Medical Clinic*



# What is an audiologist?

- Test hearing and balance in newborns, children and adults
- Examine ears and test for problems in the middle and inner ear
- Provide rehabilitation for people with hearing problems

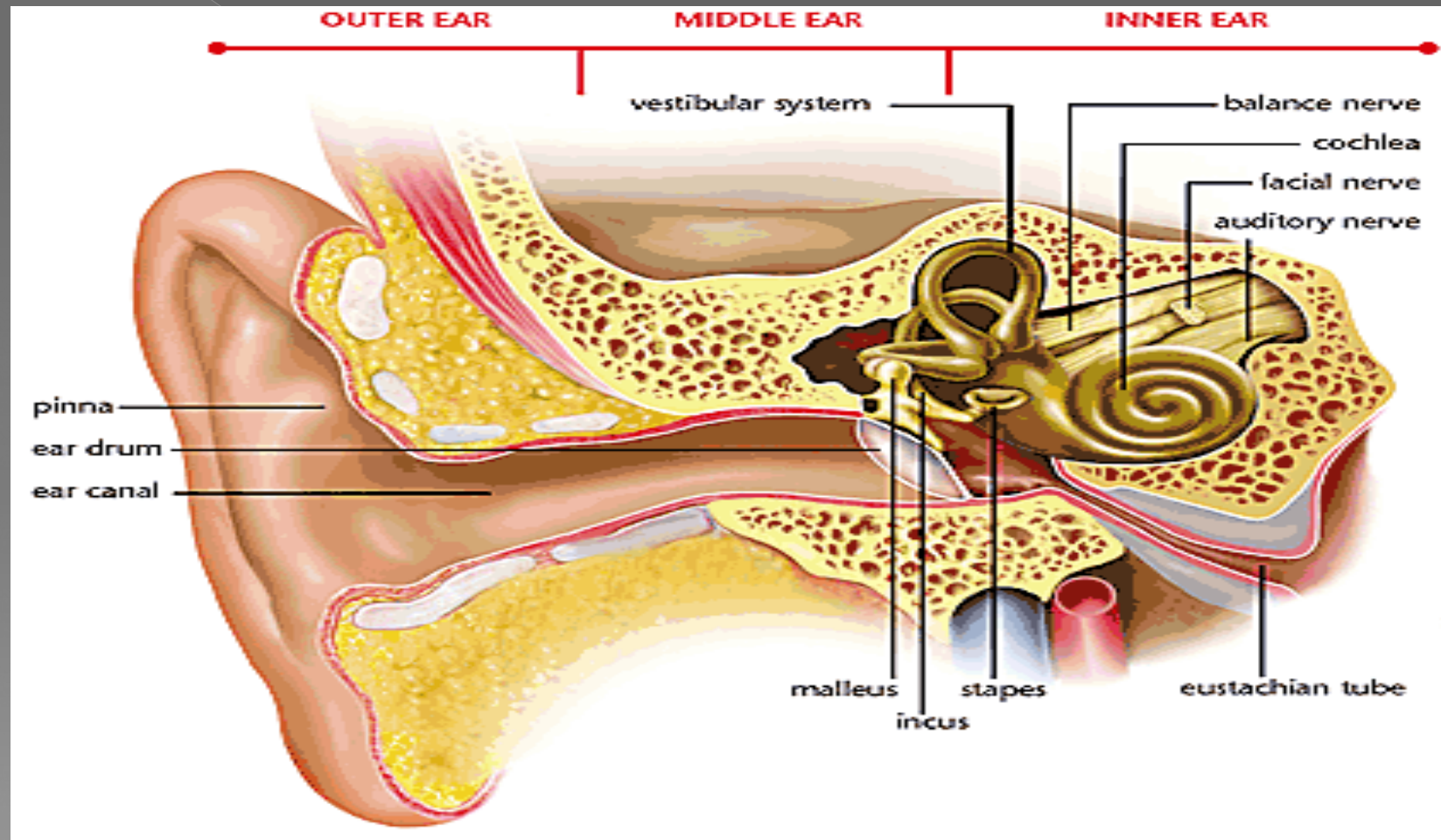


# Introduction

- Hearing loss in children
- Hearing loss in adults



# The Ear



# Hearing in children with TS

- ◉ Lack of evidence on hearing levels in infants
- ◉ Studies on children aged 10-16
  - ◉ 33-53% had conductive hearing loss
  - ◉ 13-58% had sensorineural hearing loss

Large Variation in study results



# Signs of hearing problems in a child

- ◉ Asking for things to be repeated especially when they are not facing the speaker
- ◉ Getting lost/accused of day dreaming at school
- ◉ Shouting or talking very quietly
- ◉ Sensitive to loud noises
- ◉ Speech problems
- ◉ Turning up TV
- ◉ Misunderstandings

# What to do if you think your child has a hearing loss

- ◉ Speak to your GP
- ◉ Your child may need to be referred to an audiologist and/or Ear Nose and Throat Dept.
- ◉ Face child and get their attention before speaking to them,
- ◉ Speak a little slower and clearly
- ◉ Ask for child to be moved to front of class

# Intervention

- Medical/surgical

- Amplification

and most importantly

**Monitor**



# Hearing in adults with TS

- 17% - normal hearing
  - 19% - conductive hearing loss
  - 47% - sensorineural hearing loss
- Results based on adults over 16 year with TS

# Signs of Hearing loss in Adults

- Needing things to be repeated
- Turning up TV or radio
- Finding that people mumble instead of talking
- Significant difficulty hearing when in background noise
- Tired in work, getting lost at meetings, lack of focus

# What to do if you think your hearing is down

- ◉ Go to your GP
- ◉ Go to local audiology clinic
- ◉ May need onward referral to ENT

# Intervention

- Medical / surgical
- Hearing aids

**MONITOR**

# Hearing Aids



# Welcome to join study

- Research on hearing loss in adults with TS
- Testing still being carried out in the Hermitage Medical Clinic- free of charge
- All **over 16s welcome**



# Any Questions?



